

# DV50CE TILT MOTOR

## 2017,2018,2019



### FEATURES:

- Electronic Limits
- Favorite Position
- 3 x Selectable Rpm
- Jog or latch & Run Modes

DC motors are powered from a 12V DC power source. AA Battery wands, re-chargeable battery packs and A/C power supplies are available, with a variety of quick connect extension cords. For centralized installations, power supply range can be extended with 18/2 wire.

- During operation, if voltage drops to less than 10V, the motor will beep 10 times to indicate a power supply issue.
- Motor will stop running when the voltage is lower than 7V and it will resume again when the voltage is greater than 7.5V.

This table describes the function of a short **P1** button press/release(<2 seconds) depending on current motor configuration.

P1 Press	Condition	Function Achieved	Visual Feedback	Audible Feedback	Function Described
Short Press then Release (<2 sec)	If limit is NOT set	None	No Action	None	No Action
	If limits are set	Operational control of motor, run to limit. Stop if running	Motor runs	None	Operational control of motor after pairing and limit setting is completed first time

The **P1** Button is utilized to administer motor configuration as described below

#### Pairing Mode



#### Reverse Direction

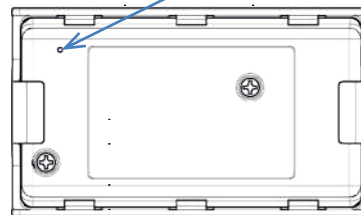


#### Reset To Factory Settings



Hold P1

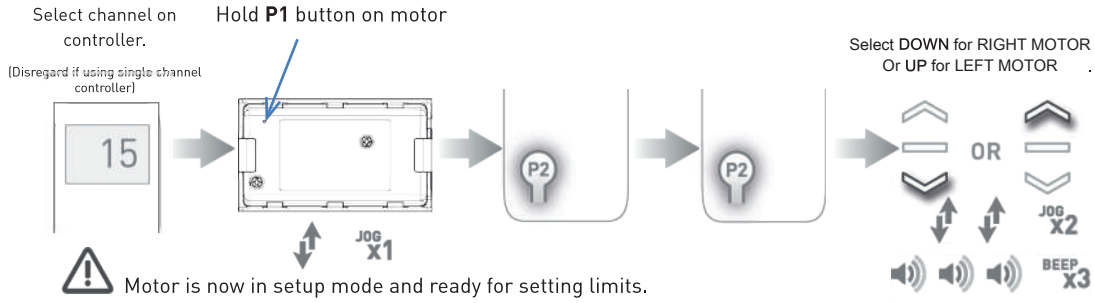
P1



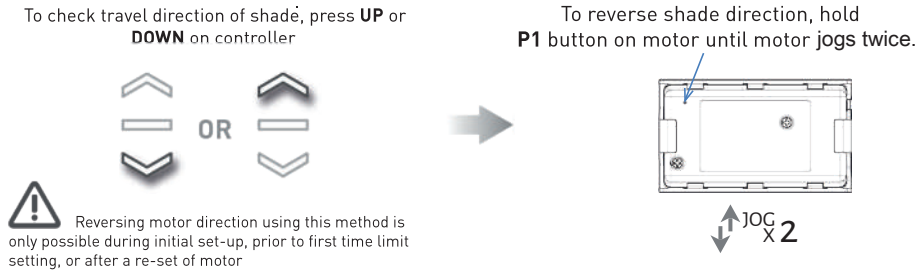
### TROUBLESHOOTING

Problem	Cause	Remedy
Motor is not responding	A / C power supply not plugged in.	Check motor to power cable connection and AC plug.
	Battery in wand are depleted	Replace 8xAA alkaline batteries.
	Power failure	Check power supply to motor is connected and active
	Transmitter battery is discharged	Replace battery
	Battery is inserted incorrectly into transmitter	Check battery polarity
	Radio interference/shielding	Ensure transmitter is positioned away from metal objects and the aerial on motor or receiver is kept straight and away from metal
	Receiver distance is too far from transmitter	Move transmitter to a closer position
Unable to adjust or set limits.	Remote is in a locked state.	Change remote status to an unlocked state
Cannot program a single Motor (multiple motors respond)	Multiple motors are paired to the same channel.	Always reserve an individual channel for programming functions
		SYSTEM BEST PRACTICE - Provide an extra 15 channel remote in your multi motor projects, that provides individual control for each motor for programming purposes Place all other motors into sleep mode

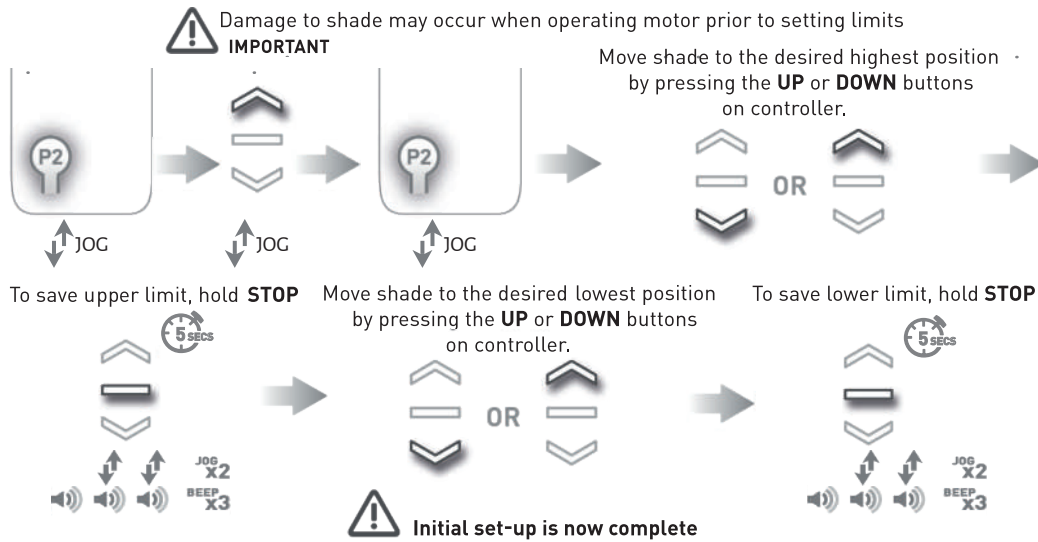
## Pair Motor with controller



## Check motor direction



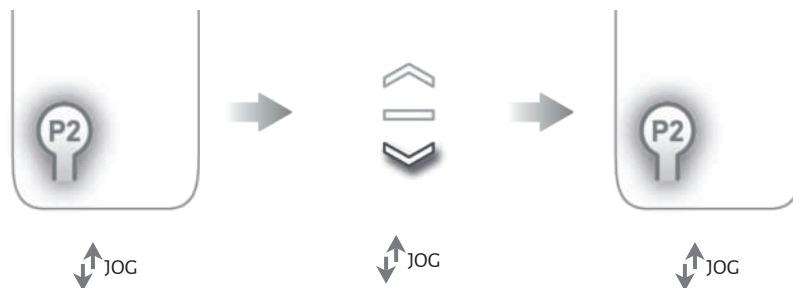
## Set limits



## Adjust limits

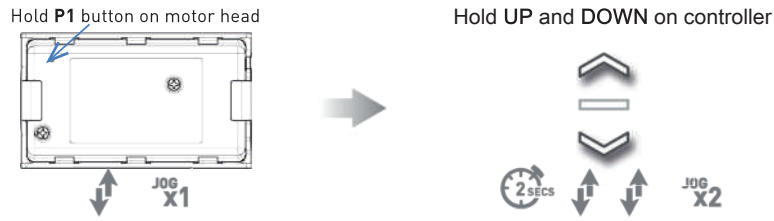
Must Delete Limits and Set Limits again

## Delete limits



## ADDING OR REMOVING CONTROLLERS AND CHANNELS

### Using motor P1 button



### Using a pre-existing controller

- A**= Existing controller or channel (to keep)
- B**= Controller or channel to add or remove

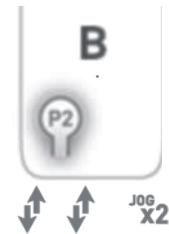
Press **P2** on existing controller'



Press **P2** on existing controller'

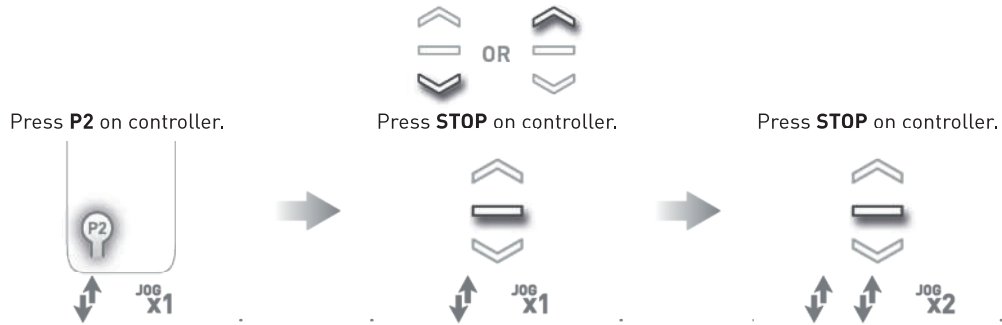


Press **P2** on new controller'



### Set favorite position

Move shade to the desired position by pressing the **UP** or **DOWN** button on the controller.



### Send shade to favorite position

Hold **STOP** on controller.



### Delete favorite position

Press **P2** on controller.



Press **STOP** on controller.



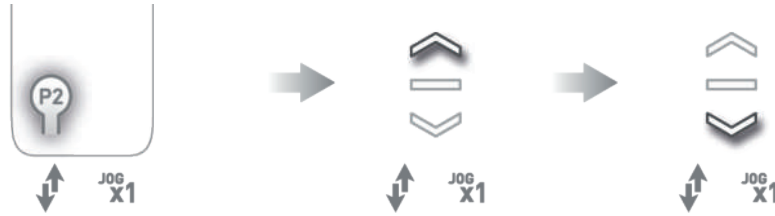
Press **STOP** on controller.



## Jog Mode

### Changing Jog Mode

Switches between jog and run mode



### Increase Jog Increment

Hold UP and DOWN  
until motor jogs



Press UP on controller



### Decrease Jog Increment

Hold UP and DOWN  
until motor jogs

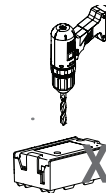
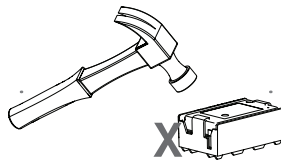
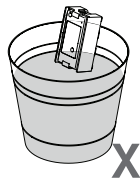


Press DOWN on controller



### **WARNING: Important safety instructions to be read before installation.**

Incorrect installation can lead to serious injury and will void manufacturer's liability and warranty.



### **CAUTION**

- Do not expose to moisture or extreme temperatures.
- Do not allow children to play with this device.
- Use or modification outside the scope of this instruction manual will void warranty.
- Installation and programming to be performed by a suitably qualified installer.
- For use within tubular blinds.
- Ensure correct crown and drive adaptors are used for the intended system.
- Keep antenna straight and clear from metal objects
- Do not cut the antenna.
- Ensure torque and operating time is compatible with end application.
- Do not expose the motor to water or install in humid or damp environments.
- Motor is to be installed in horizontal application only.
- Do not drill into motor body.
- The routing of cable through walls shall be protected by isolating bushes or grommets.
- Ensure power cable and aerial is clear and protected from moving parts.
- If cable or power connector is damaged do not use.